



Thoughtfully Designed, Seamlessly Connected



**CROWNE PLAZA**<sup>®</sup>

AN IHG<sup>®</sup> HOTEL

SYDNEY DARLING HARBOUR

## WELCOME TO CROWNE PLAZA SYDNEY DARLING HARBOUR

At Crowne Plaza Sydney Darling Harbour we're all business, mostly. We believe that your 9-to-5 life is just the beginning to your business travel; blending in your 5-to-9 life is just as important. That is why we are here to redefine the modern business travel to how it should be, not how it used to be.

This guide is designed to inspire, energise, connect you to your conference, and to ensure your delegates can enjoy quality downtime in the heart of Sydney CBD.

Our dedicated Crowne Meetings Manager and team of expert planners are ready to custom design your event, to ensure your delegates leave feeling energised, inspired and refreshed.

If there is anything you require, we are here to help. We look forward to working with you on your next memorable event.



## CONNECTING TO MEETINGS & EVENTS

On level one of the hotel, connecting at Crowne Plaza Sydney Darling Harbour through Meetings and Events is made easy with impressively designed, adaptable rooms for any style of conference or event. Each event space incorporates technological-savvy design to ensure a cohesive and seamless experience for small or large gatherings. Called “The Galleries”, the 239 sq m ballroom can be split into three separate meeting rooms. The hotel’s Studio workspace can be used as an executive boardroom or private workspace, and the outdoor pool-side deck a perfect social and informal setting. All function rooms are pillar-less and have floor to ceiling windows flooding the spaces with natural light to keep meeting delegates alert and inspired.

**We are here to cater for the modern meeting needs.**

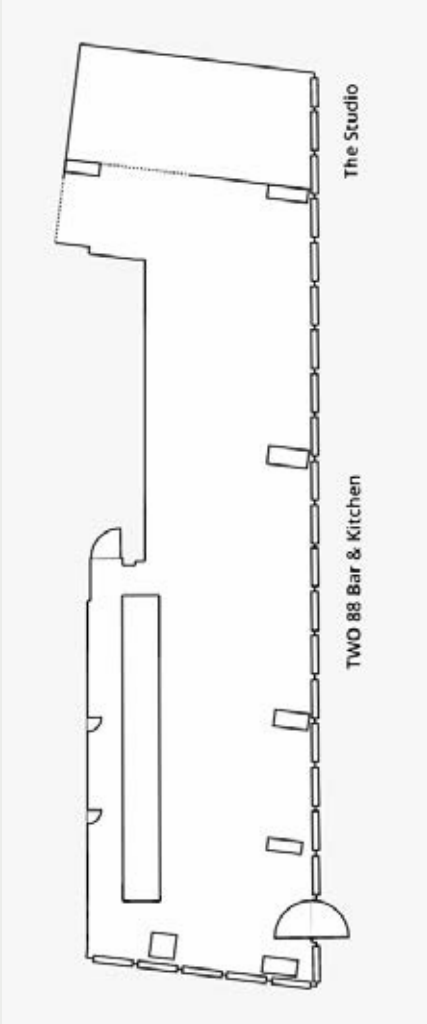
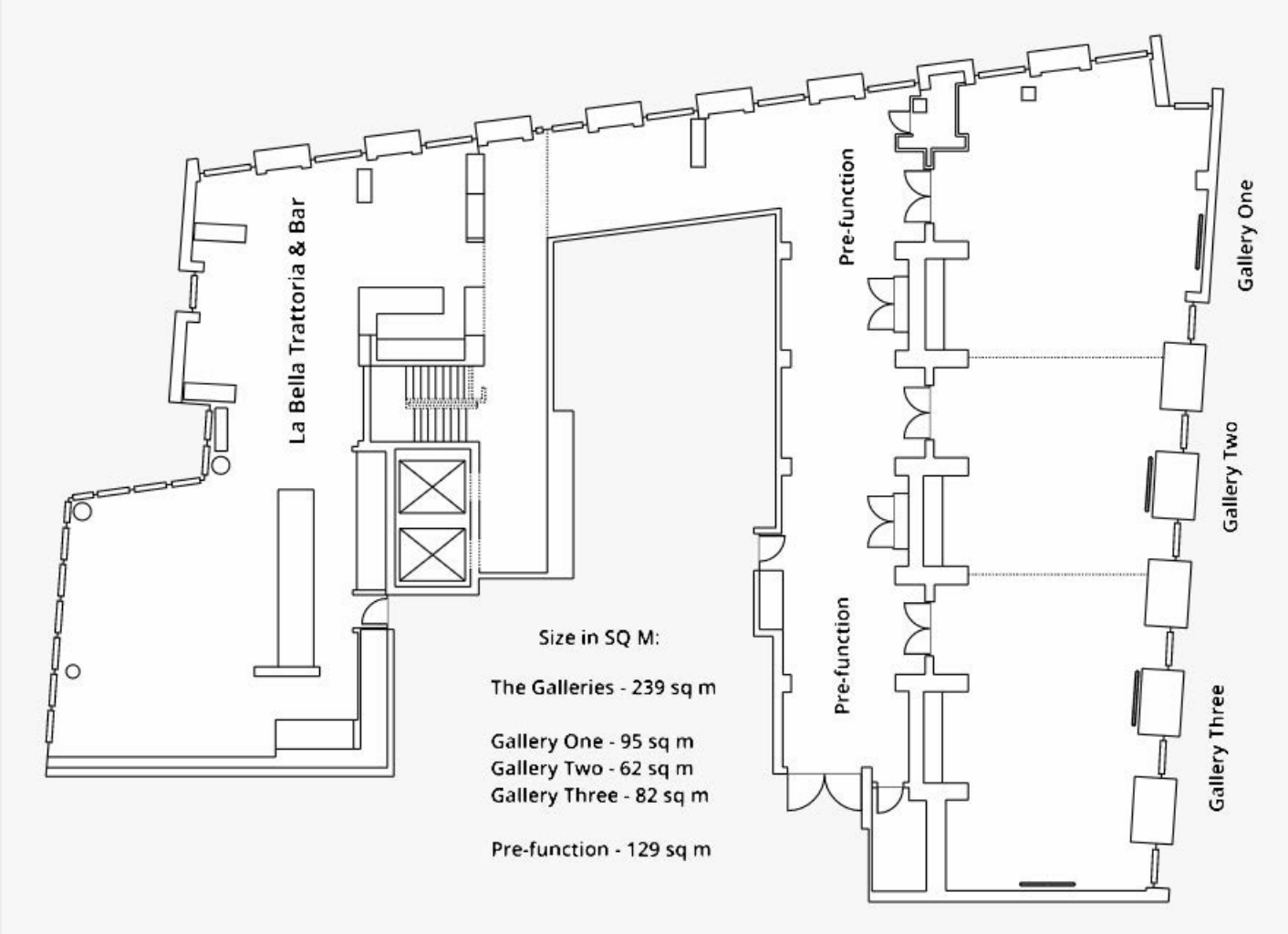
It is no longer just about the presenter standing in front of the room doing a presentation, our meeting spaces are designed and can be set-up in a way that allows flexibility – cast your presentation wirelessly onto our 86 inch 4K HD presentation screens and connect seamlessly with Samsung Digital Flips for a collaborative and engaging session.



## MEETING CONFIGURATIONS

EVENT SPACE	SQ M	CEILING HEIGHT	BANQUET	CABARET	U-SHAPE	HOLLOW SQUARE	THEATRE	CLASSROOM	COCKTAIL	BOARDROOM	4 SQM PER PERSON	2 SQM PER PERSON
GALLERY ONE	95	2.85	50	42	22	28	84	36	84	22	24	47
GALLERY TWO	62	2.85	36	30	18	20	50	22	50	16	16	31
GALLERY THREE	82	2.85	40	36	26	30	75	32	75	24	21	41
THE STUDIO	27	2.85								12	7	12
TWO 88 BAR & KITCHEN	164	6	50						80		41	80
LA BELLA TRATTORIA & BAR	186	2.85	90						120		47	90
<b>COMBINATION SPACES</b>												
THE GALLERIES	239	2.85	135	110	46	60	209	96	209	62	60	120
GALLERY ONE + TWO	157	2.85	86	75	28	40	144	66	144		40	78
GALLERY TWO + THREE	144	2.85	86	75	38	42	135	60	135	42	36	72

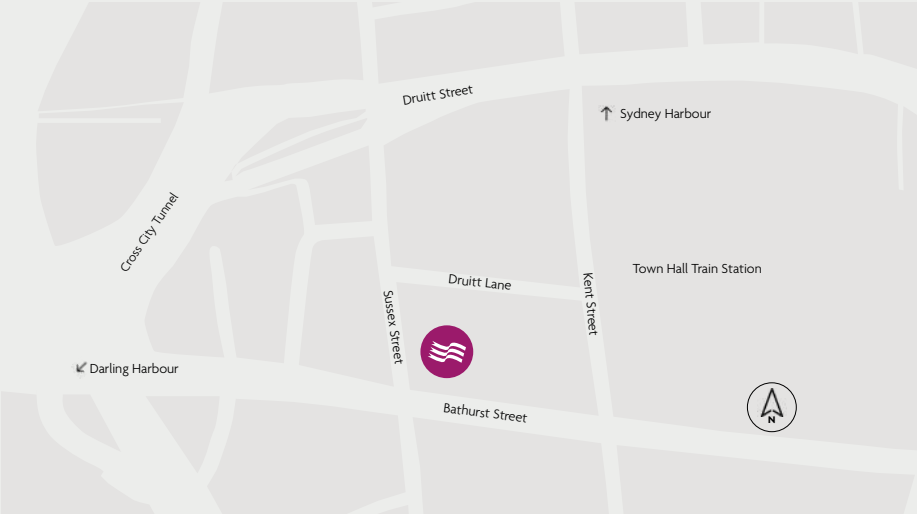
# FLOOR PLANS



# CONNECTING TO SYDNEY

See Sydney's busy business district by day, bustling city life by night.

When it comes to choosing a venue for your event, location matters. In a prime location of the Sydney CBD, it will just take 2-minutes to walk to the Town Hall light rail station where your delegates can then choose to glide down George Street to the iconic Circular Quay or explore the alleyways of Surry Hills on their downtime. On the productive side, you are within an 8-minute walk from Darling Harbour and the International Convention Centre Sydney. Access to the airport is easy and fast from Town Hall train station or by car, 8km.



## CONNECTING TO YOU

Crowne Plaza Sydney Darling Harbour offers a new era of sophistication in hotel design. With floor to ceiling windows providing picturesque views of Sydney's streetscape below, the hotel is a peaceful and intimate sanctuary; a home away from home.

The luxury of space is clearly evident in the 152-guestrooms, with each divided into four distinct zones – a desk space for work, a sofa area to unwind, king size beds for a good night's sleep and well-lit, spacious bathrooms replete with Antipodes organic amenities.

From USB outlets and wireless charging, to in-room Bluetooth speakers, unlimited high-speed wifi and Chromecast Smart TVs, the generously sized guestrooms are brimming with technology-led features designed to blend the 9-to-5, 5-to-9 day.

## GUEST ROOM BREAKDOWN

ROOM TYPE	NUMBER OF ROOMS	SPLIT OPTIONS	CONNECTING
King Standard	45	14	31
King Accessible	8		8
King Superior	64	27	10
Twin Deluxe	28		
Premium Deluxe King	7	7	7



## CONNECTING TO WELLNESS

Our rooftop heated infinity pool and 24-hour in house gym is available for the health conscious. Whether it be a quick run in the morning before breakfast or a relaxing evening by the pool after a day of work, we have it sorted.

It is important to us that our guests do not just have a conducive place to work, but also to sleep. The Sleep Advantage™ programme has been carefully designed to ensure that you get a sound night's sleep and wake up feeling rejuvenated. After all, we are not just providing you a room to sleep in, but a haven to relax and unwind.

### SLEEP ADVANTAGE™ PROGRAMME



**Premium Bedding Experience**  
Combines comfortable bedding with premium bed linen and ergonomic pillows\* to induce sleep in an instant.

*\*available on request*



**Quiet Zone**  
Quiet Zone Rooms are also assigned in a way that noise levels can stay low and you can sleep well.



**Guaranteed Wake-up Call**  
The service is provided 24 hours a day, 7 days a week, upon request.



**Aromatherapy**  
A therapeutic, fragrant spray that aids a better night's sleep, it has Camphor, Eucalyptus aromatic oils and Patchouli to infuse serenity and peace into the guest room.





## CONNECTING TO CREATIVITY

### FOOD PHILOSOPHY

Whether it is a meal for one or a meal for one hundred, we believe that there are essential key ingredients when creating a good meal:

1. Fresh and seasonal produce
2. Meticulous attention to detail
3. Sense of determination and pride

And that is why we have an extensive offering of both food and beverages at each of our dining venues.

We believe that a good meal is more than just being full or just food on a plate. It is about creating a memory and an experience that cannot be replaced.



## CONFERENCE PACKAGES

### BREAKFAST \*

Plated Breakfast from \$45 (minimum 10)

Working Breakfast from \$33 (minimum 20)

Buffet Breakfast from \$40 (minimum 20)

### FULL DAY DELEGATE PACKAGE \$95

Arrival Tea & Coffee

Morning Tea

Lunch

Afternoon Tea

Sparkling & Mineral Water

Barista Coffee

Notepads & Pens

### HALF DAY DELEGATE PACKAGE \$85

Arrival Tea & Coffee

Choice of Morning Tea or Afternoon Tea

Lunch

Sparkling & Mineral Water

Barista Coffee

Notepads & Pens

### WORKING LUNCH

Selection of Sandwiches, Wraps, Salads & Sides \$45

### LUNCH & DINNER

2 Course Plated \$75 (minimum 15)

3 Course Plated \$95 (minimum 15)

Includes main alternate serve

Additional alternate serve \$5 per course

### COCKTAIL CANAPÉ PACKAGES

1 hour We recommend 6 canapés per person \$33

2 hour We recommend 8 canapés per person \$44

3 hour We recommend 12 canapés per person \$66

4 hour We recommend 12 canapés + 2 substantial per person \$83

Additional canapés \$5.50

Additional substantial \$8.50

### PLATTERS

Cheese, Charcuterie, Antipasto & Slider Platters from \$149 (12 people)

### BEVERAGE PACKAGES

1 hour from \$32 per person

2 hour from \$43 per person

3 hour from \$48 per person

4 hour from \$54 per person

## CONNECTING TO PEOPLE

### LA BELLA TRATTORIA & BAR

A modern Italian, seasonally-inspired restaurant which embraces the simplicity of Italian fare while putting a creative spin on traditional dishes. Accompanied by a wine and liquor selection of Italian and domestic varieties, all enjoyed in an atmosphere of casual elegance. Open daily for breakfast and dinner.

### TWO 88 BAR & KITCHEN

Centred around antipasto platters, cocktails and wine, TWO 88 Bar & Kitchen is a destination in its own right for light business lunches, after-hours drinks and the after-work crowd. Its long marble bar, gold-dripped statement lights and wrap around glass exterior fronting Sussex Street create the perfect setting to unwind in relaxed yet refined style. Open daily for lunch and dinner until late.

### CAFÉ 58

The lobby cafe is the perfect spot to relax before or after check-in with a book, coffee and something deliciously sweet. Open daily for breakfast and lunch.



## CONNECTING TO EARTH

Preserving resources and ensuring that we are operating as a responsible business is important to us and that is why we implemented initiatives around the hotel to help reduce waste and be sustainable. As each small step counts, we invite all our guests, whether you are here for a conference, staying at the hotel or both, to take part and help save our mother nature.

### *A big difference begins with small steps.*

We understand that by implementing new procedures and products, we can help make a difference. So, we have opted into paperless throughout the hotel, biodegradable straws, Brita water dispensers in our dining and conference venues, biodegradable coffee cups and tea bags, carefully chosen sustainable organic Antipodes bathroom amenities, IHG Greener Stay and partnering with suppliers that align with our philosophy.

From using smart design and innovative systems, everything that we do to be sustainable can make a big difference to our planet. And by hosting your event with us, it means that you are part of a worldwide effort to protect our environment.



## AUDIO VISUAL AND TECHNOLOGY

When it comes to all the technical specifications, it is always good to give it to the expert. In our conferencing and event spaces we have all the technology needs for you to run your event – 86” 4K HD Presentation Screens, 55” Samsung Digital Flips, in-built speaker system and in-built hearing loop aid. But we understand that there are times you want to make your event a little different and that is why we have our audio-visual and technology experts for this.

Audio Visual Events (AVE) is one of Sydney’s leading audio-visual companies with extensive experience in the events and conferencing industry. As a preferred partner for Crowne Plaza Sydney Darling Harbour, they have all it takes to close the gap between our in-built technology to the event that you have been desiring.

And of course, it is all about you and your event, so if you have an audio-visual and technology partner which you have been working with and would like to bring in for the event, we welcome our industry colleagues. Just let us know.



# IHG<sup>®</sup> Business Rewards

## OUR WAY OF SAYING THANK YOU

Whether you are a sports league parent reserving team accommodations or a professional planner organising an international meeting, we want to reward you for booking with IHG<sup>®</sup> on behalf of others. Each hotel room you reserve, meeting you plan, or event you organise with Crowne Plaza Sydney Darling Harbour could earn you points through IHG<sup>®</sup> Business Rewards.

## IHG<sup>®</sup> BUSINESS REWARDS BENEFITS

### Fast Track Your Membership Status

- Reach IHG<sup>®</sup> Rewards Club: Gold Elite with only 10,000 points, Platinum Elite with only 40,000 points and Spire Elite with only 75,000 points
- Earn three points per \$1 USD (maximum 60,000 points awarded per event)
- Earn rewards by booking travel for yourself and on behalf of others

### Manage Just One Account

- One membership number for all of your rewards programs
- Online access to all upcoming events and reservations that you book

### Your Potential Rewards.

- Reward nights at over 5,400 hotels worldwide, with no blackout dates
- Gift cards and certificates from countless retailers, turn points or points and cash into flights anywhere on over 400 airlines worldwide
- Meeting credits, ranging in value from \$250 to \$1,000 USD toward your next event.



*\*Terms and Conditions: The IHG<sup>®</sup> Business Rewards program is available at InterContinental and Crowne Plaza hotels only in conjunction with meetings of ten or more paid guest rooms for at least one night of the event and must include qualified catered/banqueting events directly associated with a meeting, booked and held within the U.S., Canada, Mexico, Latin America, Caribbean and Asia Pacific (excluding properties in Europe, the Middle East, Africa, India and Southwest Asia). For full terms and conditions please visit the IHG Business Rewards website.*



**CROWNE PLAZA®**

AN **IHG®** HOTEL

**SYDNEY DARLING HARBOUR**

58 Bathurst Street Sydney NSW 2000  
t: +61 2 9063 0100 | e: [events.cpsdh@ihg.com](mailto:events.cpsdh@ihg.com)  
[crowneplaza.com/darlingharbour](http://crowneplaza.com/darlingharbour)